



Central South Longmont Flex/Offices for Lease

105 S SUNSET STREET | LONGMONT, CO 80301

Suite C

Size: 1,700 SF
Rate: \$15.00 NNN (\$6.35)
Available: Now

Suite D-G

Size: 6,600 SF
Rate: \$12.50 NNN (\$6.35)
Available: Now

Suite H

Size: 4,363 SF
Rate: \$13.00 NNN (\$6.35)
Available: Now

Suite Q

Size: 1,500 SF
Rate: \$15.00 NNN (\$6.35)
Available: Now

WATERFRONT FLEX 105

Anchor your operations in these updated flex office spaces on the scenic banks of the St. Vrain River. Located in the heart of central-south Longmont, these gems offer a blend of professional tranquility and vibrant surroundings. Featuring updated office spaces and spacious workshops with overhead doors, your team will navigate the workday with ease. After a productive day, unwind with a short paddle downstream to local breweries, restaurants, and convenient shopping, or get in 9 holes at Sunset Golf Course. Catch this wave of opportunity before it's gone!

PROPERTY HIGHLIGHTS

- Various suite sizes available with OH Doors
- Located on the St. Vrain River with access to a multi-use path
- Breweries, shopping and restaurants nearby
- Zoning: N-PE
- Suites D-G ideal for lab space or R&D user
- Ample power available
- 1,500 SF - 12,663 SF



SUITE H



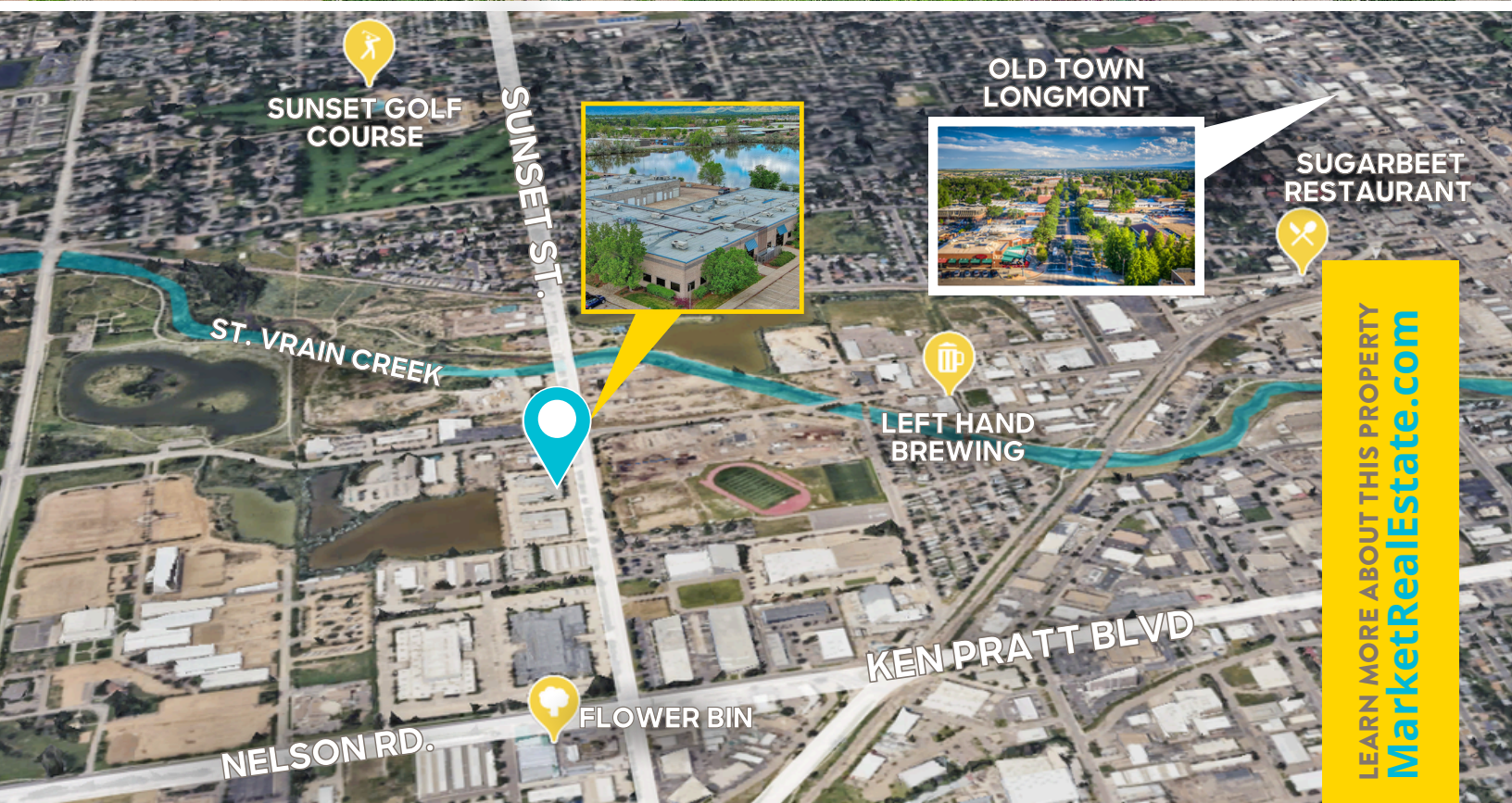
SUITE G



BACK OF BUILDING



LEARN MORE ABOUT THIS PROPERTY
MarketRealEstate.com

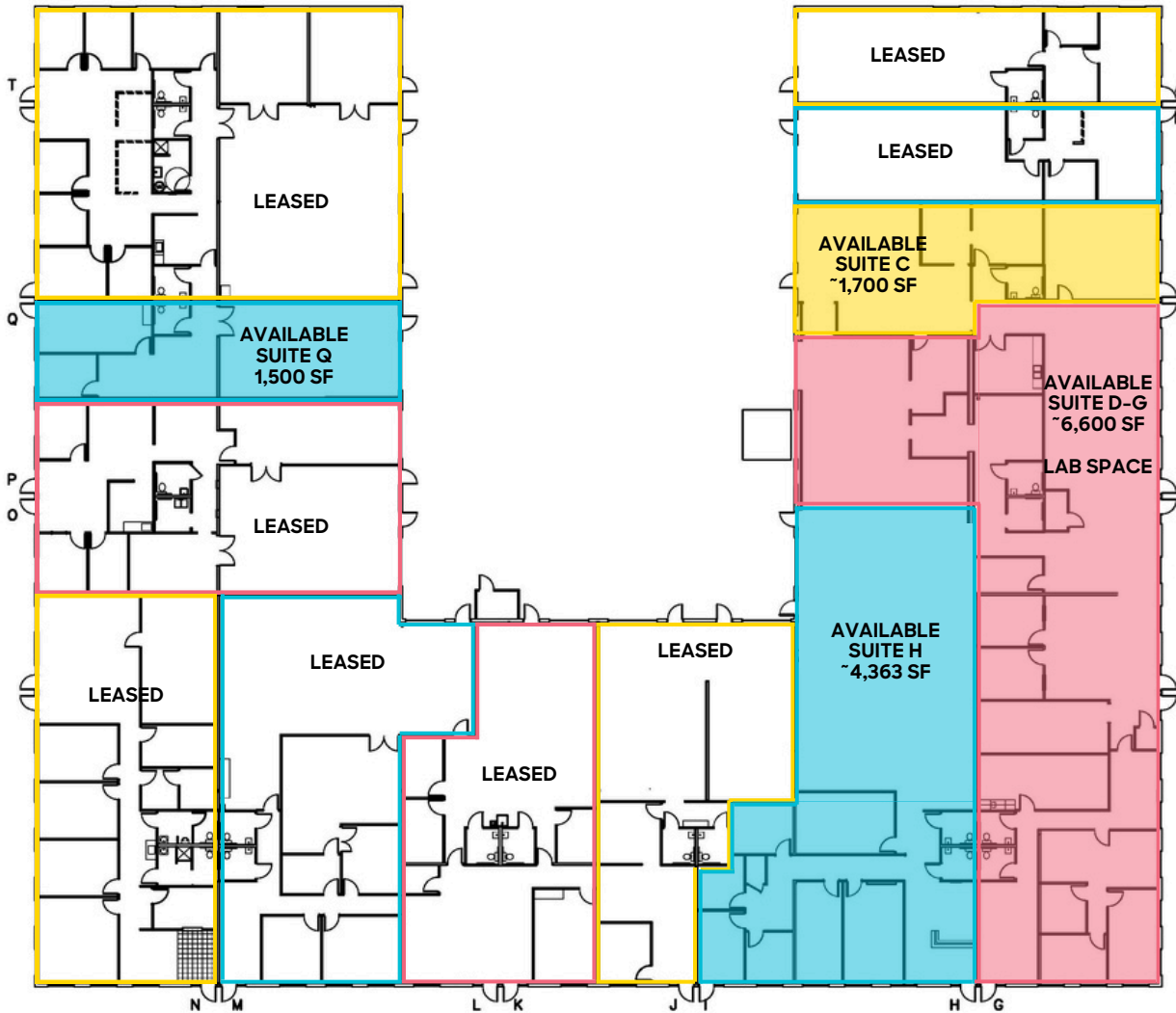


HEIDI SCHAMBER
303 444 4344
Heidi@MarketBoulder.com

ANNIE LARNER
303 444 1344
Annie@MarketBoulder.com

LEARN MORE ABOUT THIS PROPERTY
MarketRealEstate.com





[CLICK HERE](#)
for Suite H virtual tour

LEARN MORE ABOUT THIS PROPERTY
MarketRealEstate.com

HEIDI SCHAMBER
303 444 4344
Heidi@MarketBoulder.com

ANNIE LARNER
303 444 1344
Annie@MarketBoulder.com

