

Automotive Space For Lease Downtown

1119 KIMBARK ST | LONGMONT, CO 80501

Size: 3,160 SF

Rate: \$13.00 NNN

Available: 10/1/23

AUTOMOTIVE HEAVEN

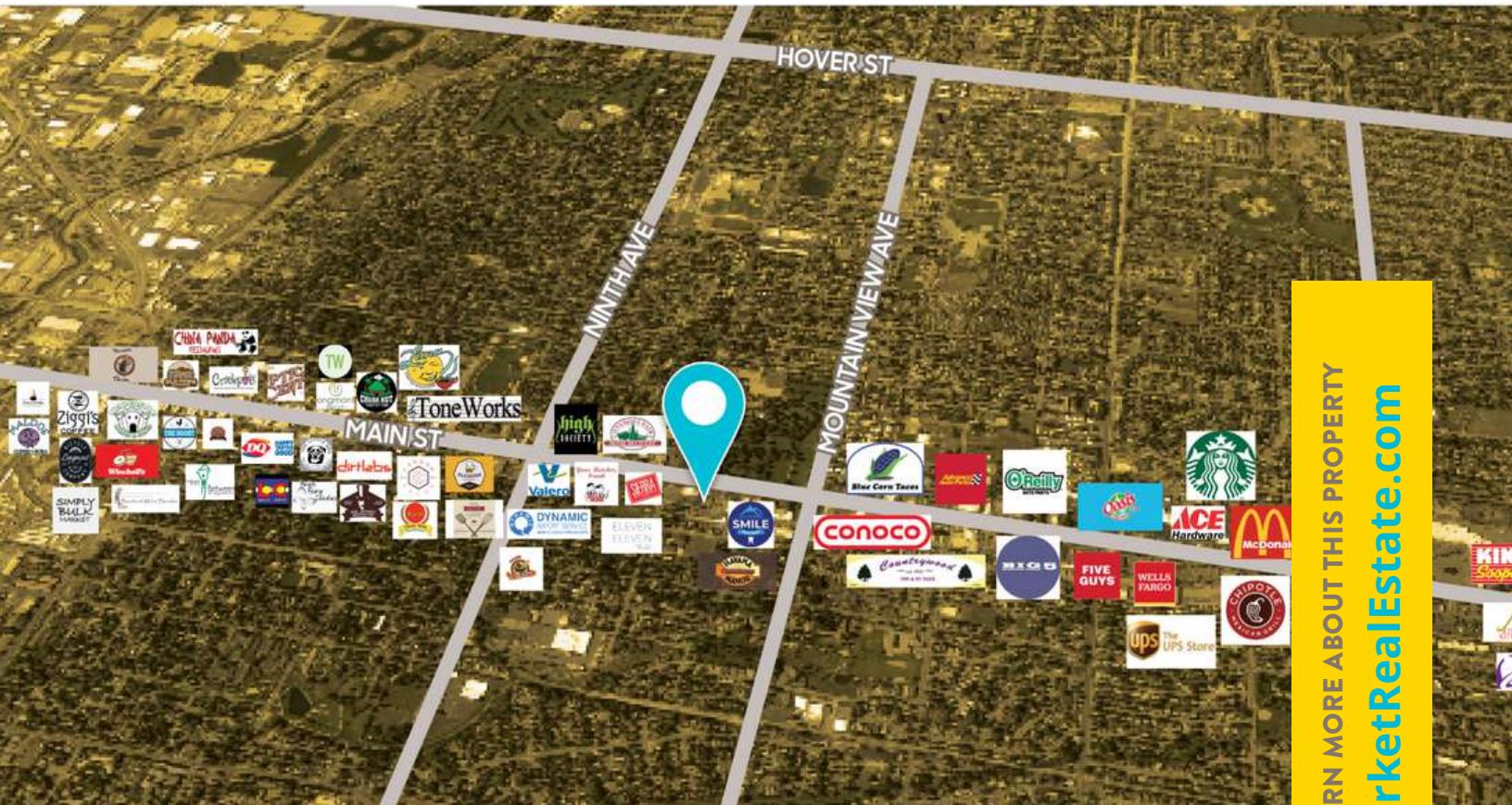
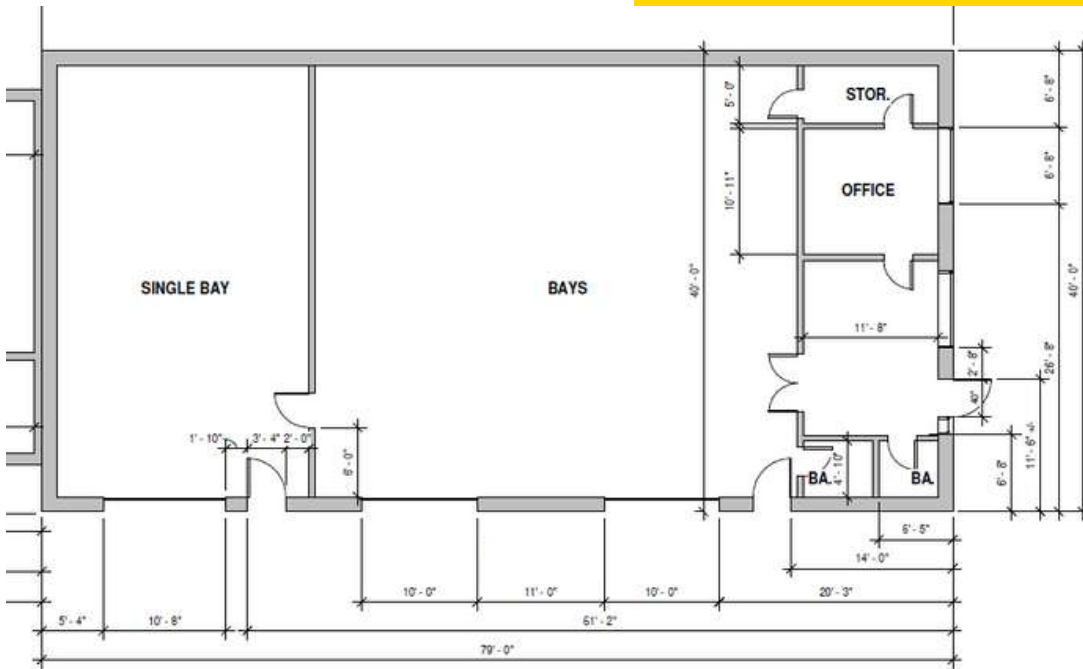
Have you ever seen an industrial space so close to all of the action? Well, you're about to – set one street back from Main Street. This place has it all. Currently known as Schilling Automotive, the space features three large garage doors, a reception area, and a hard-to-beat location. It's like we died and went to automotive-repair heaven. Take advantage of all the action of the main drag without the hassle of traffic right outside your door.

PROPERTY HIGHLIGHTS

- Located in the heart of Longmont, one street away from Main
- Three 10x10 overhead doors
- Some of the most affordable space downtown
- Reception space in front
- Ample parking



LEARN MORE ABOUT THIS PROPERTY
MarketRealEstate.com



LEARN MORE ABOUT THIS PROPERTY
MarketRealEstate.com

TODD WALSH, CCIM
 303 444 5040
 Todd@MarketBoulder.com

