

Boulder Industrial Space for Lease

1880 S. FLATIRON CT | BOULDER, CO 80301

SUITE D2

Size: 3,926 SF

Rate: \$12 NNN

Available: Immediately

SUITE K

Size: 3,792 SF

Rate: \$14 NNN

Available: 1/1/24

SUITE SPOT

Industrial charm meets modern convenience in these unique East Boulder warehouse suites. Boasting 3,926 or 3,792 square feet of flexible space, they are perfect for businesses of all kinds. With a grade-level or dock high overhead door, restroom, and ceilings that reach for the stars (well, 16 feet high), these suites are ready to make your business dreams come true. Conveniently located just off 55th Street, you'll breeze past Boulder's traffic snarls. And hey, you're just a stone's throw from Ozo Coffee, Upslope Brewing, and Wild Provisions breweries. Don't let this prime suite slip away!

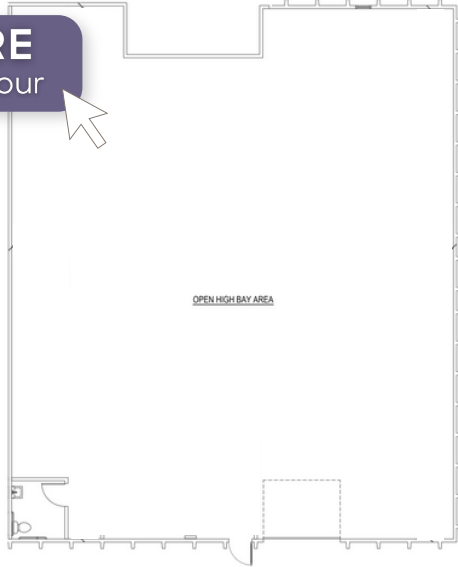
[CLICK HERE](#)
For D2 Virtual Tour



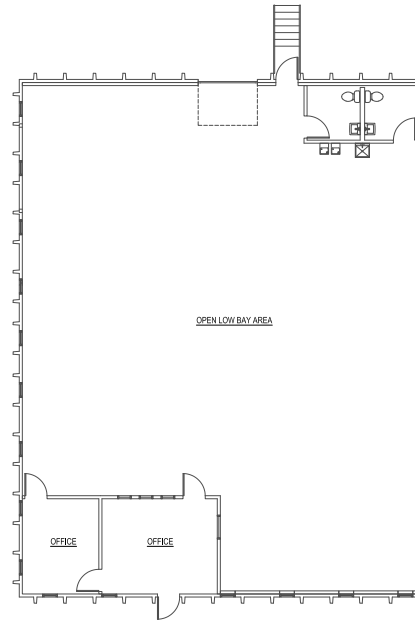
LEARN MORE ABOUT THIS PROPERTY
MarketRealEstate.com

Suite D2

CLICK HERE
For D2 Virtual Tour



Suite K



LEARN MORE ABOUT THIS PROPERTY
MarketRealEstate.com

TODD WALSH, CCIM

303 444 5040 Todd@MarketBoulder.com

NATE LITSEY

303 444 4024 Nate@MarketBoulder.com

