



market

REAL ESTATE

Retail Space for Lease in Boulder

1926 14TH ST | BOULDER 80302
SUITE 100

Size: 956 SF

Rate: \$35 NNN / \$15 OpEx

Available: 11/1/24

STEPS FROM SUCCESS

Step into the retail limelight with this prime 956 SF space, just a hop, skip, and a jump from the bustling Pearl Street Mall bricks. Enjoy unparalleled visibility in a downtown location that's the heartbeat of Boulder. Surrounded by amazing retail neighbors, this spot is your perfect canvas to captivate customers and be part of the vibrant retail mix.

PROPERTY DETAILS:

- Great downtown Boulder location
- Huge visibility just steps from Pearl Street
- Small versatile retail space
- Free basement storage space
- Surrounded by shops & vibrant neighbors

CLICK HERE
for virtual tour

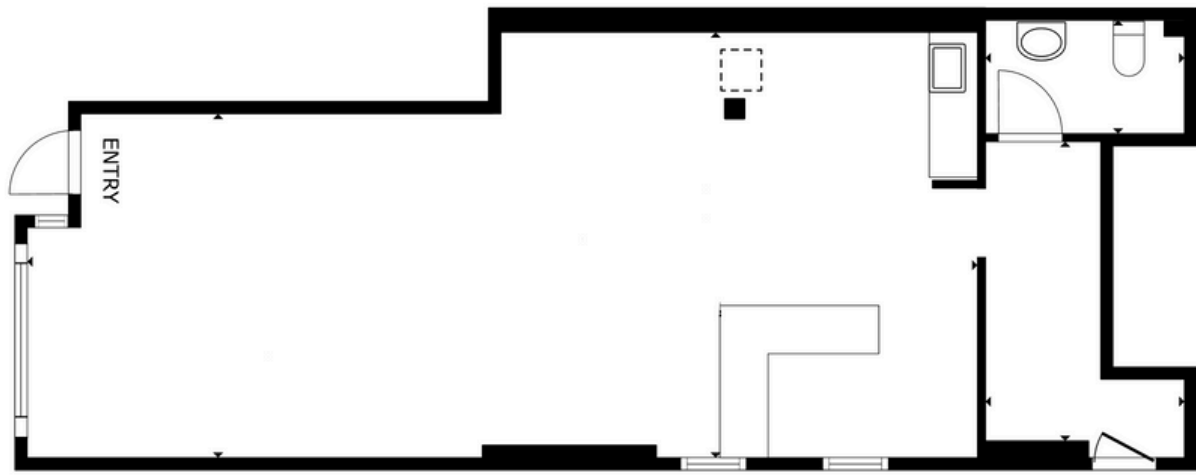


LEARN MORE ABOUT THIS PROPERTY
MarketRealEstate.com



market

REAL ESTATE



[CLICK HERE](#)
for virtual tour



LEARN MORE ABOUT THIS PROPERTY
MarketRealEstate.com

NATE LITSEY
303 444 4024
Nate@MarketBoulder.com

TODD WALSH, CCIM
303 444 5040
Todd@MarketBoulder.com

