

Brand New Second Floor Spec Suite For Lease

200 W BASELINE RD | LAFAYETTE, CO 80026

Suite 200

Size: 1,228 SF

Rate: ~~\$3,450/mo~~ gross plus utilities

Move-In Ready

Year One Introductory
Rate \$2,950 per month

ON THE GRID

This brand new build in downtown Lafayette is ready to get you all charged up! Like, literally - it's got EV charging on site. You'll be able to park your modern, efficient vehicle in the dedicated spaces and walk right into your modern, efficient workspace. And if you're feeling a little "low battery" at the office, there's food (and coffee) just steps away. The spot also boasts 16,000 vehicle passes per day, so it's got built-in buzz. Now, the only thing left to get charged up is your imagination. Can you see the space of your dreams?

PROPERTY HIGHLIGHTS

- Outstanding Downtown Lafayette location
- 16,000+ vehicles pass per day
- Walking distance to Lafayette's favorite restaurants, shops, and more
- Onsite & street parking
- Public transport directly adjacent



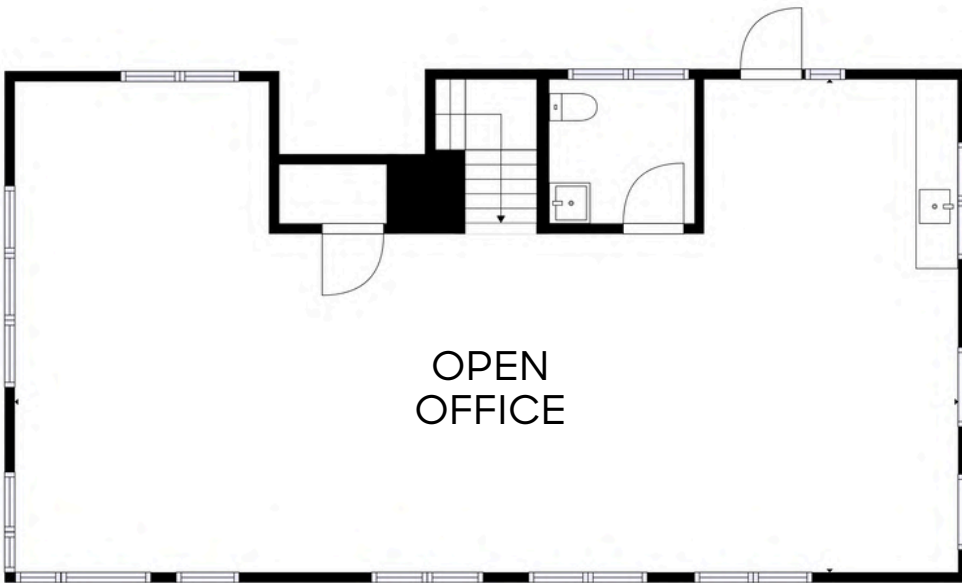
[CLICK HERE](#)
for virtual tour



LEARN MORE ABOUT THIS PROPERTY
MarketRealEstate.com

market

REAL ESTATE



[CLICK HERE](#)
for virtual tour



LEARN MORE ABOUT THIS PROPERTY
MarketRealEstate.com

BEN MYERS
303 444 4994 Ben@MarketBoulder.com

TODD WALSH, CCIM
303 444 5040 Todd@MarketBoulder.com

