

Boulder Warehouse/Flex Space for Sublease

2200 CENTRAL AVE | BOULDER, CO 80301
SUITE D2

Size: 3,200 SF
Rate: \$15.00 NNN (\$6.75)
Available: 30 Days
Term End Date: 1/31/27

HIGH-CAPACITY INSPIRATION

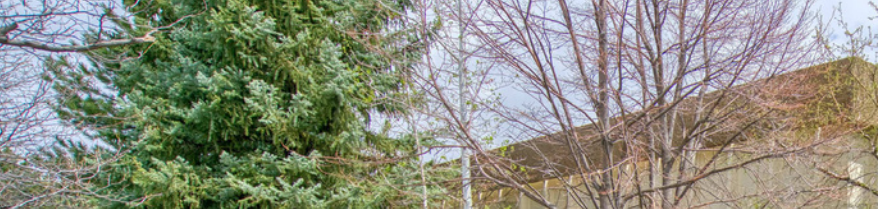
Whatever you do, you can do it BIG in this spacious high-bay warehouse in one of Boulder's best office parks. With plenty of space to spread out, fresh paint on the walls, and new floors underfoot, any manufacturer, tech company, or storage-starved startup can make this place exactly what it needs. New lighting sets the mood for your brightest ideas, and the two breweries on the block are perfect for celebrating your success.

PROPERTY HIGHLIGHTS

- High-bay warehouse
- Bright, open floor plan with two offices
- Recently remodeled
- Steps from food trucks, coffee and breweries
- Quiet Flatiron Park location in East Boulder

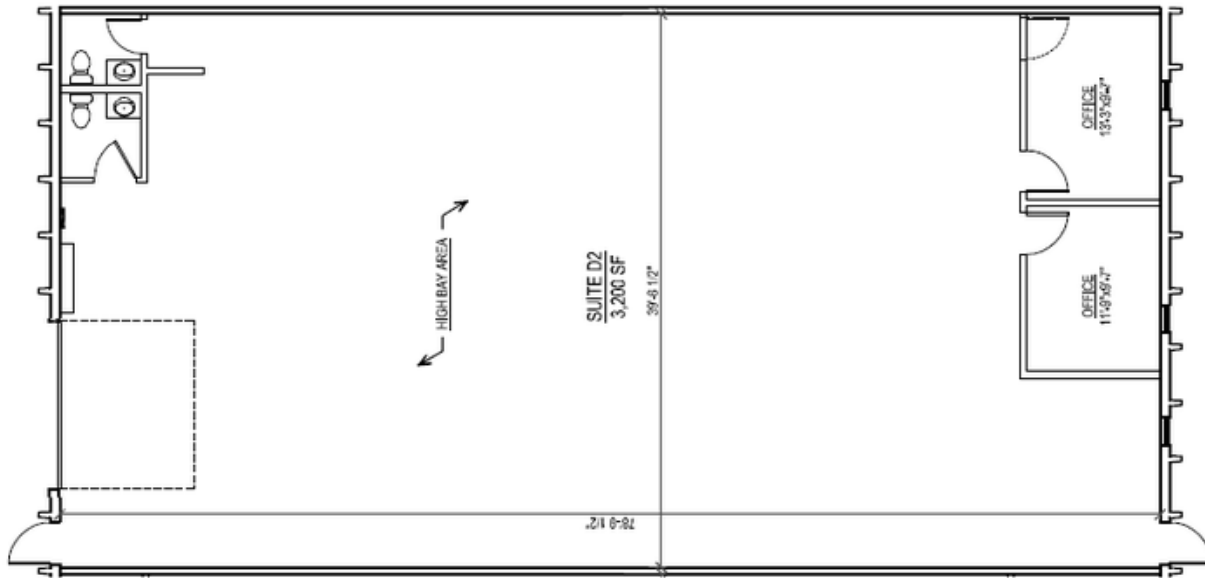


LEARN MORE ABOUT THIS PROPERTY
MarketBoulder.com



market

REAL ESTATE



LEARN MORE ABOUT THIS PROPERTY
MarketRealEstate.com

TODD WALSH, CCIM
 303 444 4888
 Todd@MarketBoulder.com

NATE LITSEY
 303 444 4024
 Nate@MarketBoulder.com

