

Creative Boulder Office Spaces for Lease

2737 MAPLETON AVE | BOULDER, CO 80304
SUITES 103, 201, & 300

Suite 103: 1,264 SF

Suite 201: 523 SF

Suite 300: 2,228 SF

Rate: \$20.00 + \$16.75 NNNs (includes utilities)

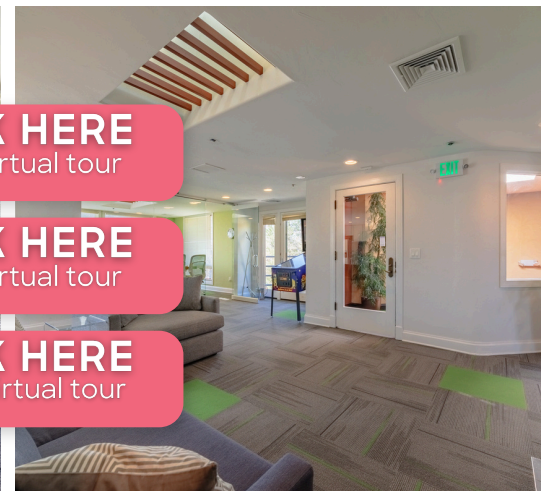
Available: Now

EASY AS 1.2.3.

Your perfect office space might await you on floor 1, 2, or 3! Situated just 1.5 miles from downtown Boulder, this beautifully maintained office building features a stunning courtyard, on-site parking, and your pick of an office that is JUST right! With multiple suites and the option for immediate occupancy, this space is ideal for businesses seeking prime office real estate in a vibrant area.

PROPERTY HIGHLIGHTS

- Innovative office space just steps from the 29th Street Mall
- Balcony with stunning mountain views
- Large windows for abundant natural light
- Convenient on-site parking



[CLICK HERE](#)
for 103 virtual tour

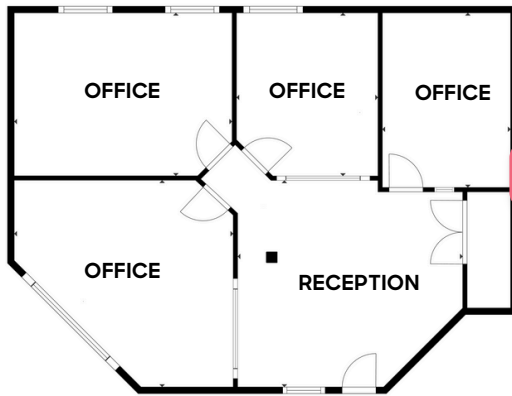
[CLICK HERE](#)
for 201 virtual tour

[CLICK HERE](#)
for 300 virtual tour



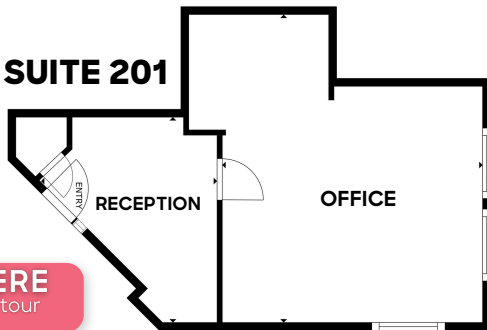
LEARN MORE ABOUT THIS PROPERTY
MarketRealEstate.com

SUITE 103



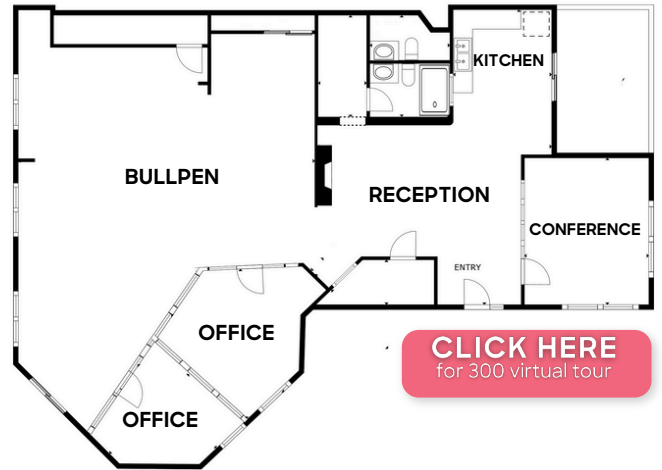
[CLICK HERE](#)
for 103 virtual tour

SUITE 201

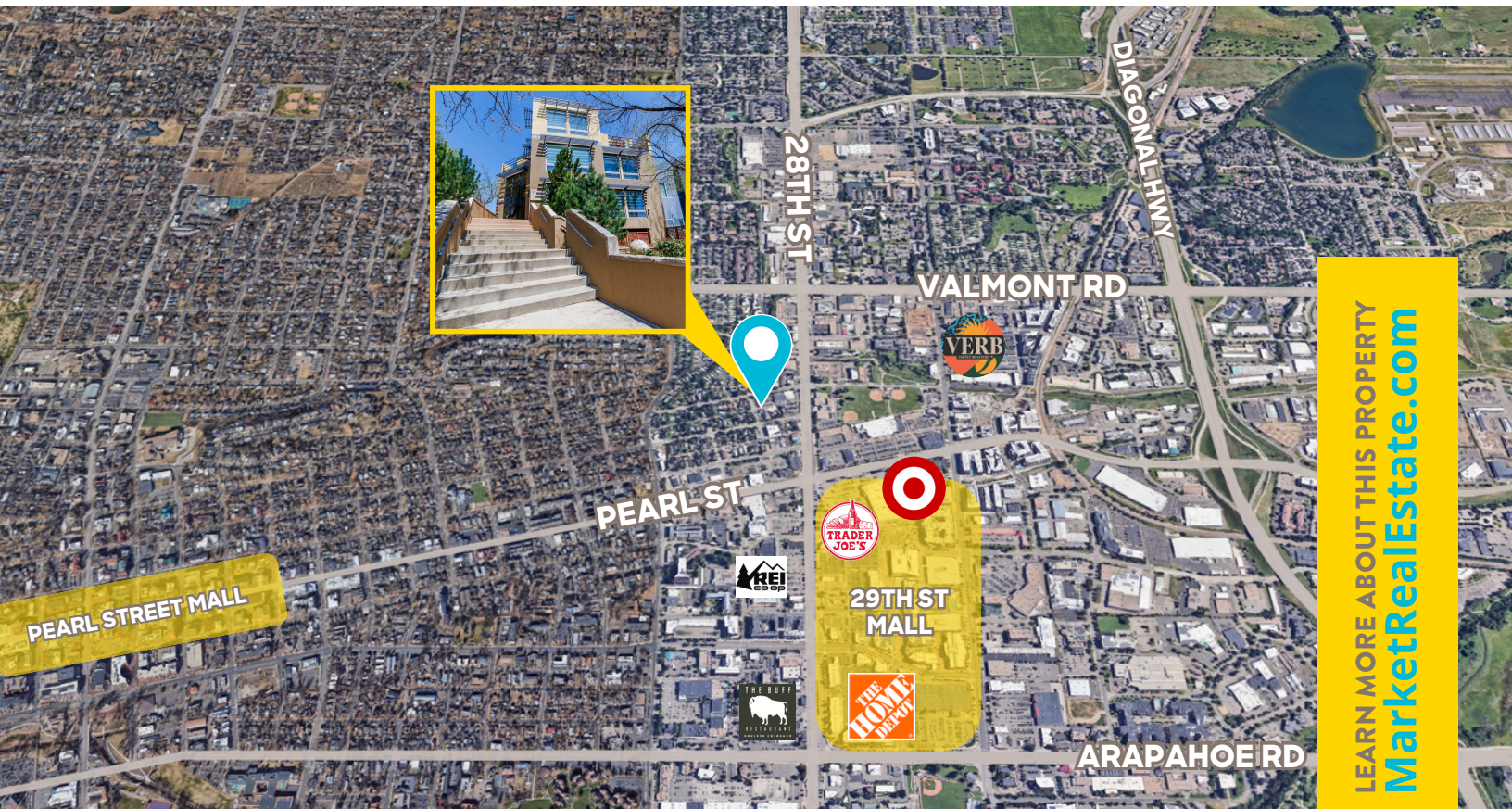


[CLICK HERE](#)
for 201 virtual tour

SUITE 300



[CLICK HERE](#)
for 300 virtual tour



LEARN MORE ABOUT THIS PROPERTY
MarketRealEstate.com

BRITTANY BOUDREAU

303 444 0566

Brittany@MarketBoulder.com

HEIDI SCHAMBER

303 444 4344

Heidi@MarketBoulder.com

TODD WALSH, CCIM

303 444 5040

Todd@MarketBoulder.com

