

Lafayette Commons For Lease: Retail/Office

400 E. SIMPSON ST | LAFAYETTE, CO 80026

SUITE 100

Size: 1,306 SF
Rate: \$2,600/mo modified gross
Available: Now

SUITE 103

Size: 220 SF
Rate: \$800/mo modified gross
Available: Now

SUITE 108

Size: 200 SF
Rate: \$900/mo modified gross
Available: Now

FLEX ON 'EM!

And do it in this versatile service retail or office space in downtown Lafayette with open floor plan, kitchenette, private entrance, and on-site parking. Wait, is “on-site parking” kind of a weird flex? But OK – get this: it’s also right around the corner from good eats and great brews (coffee... or beer!) And, if that’s not enough for you, head to the on-site fitness room to build up a little flex of your own. Even if that’s not your thing, we think that once you experience the wood, warmth, and natural light you’ll see that this location really is built different.

PROPERTY HIGHLIGHTS

- Great location in downtown Lafayette near a variety of restaurants
- Charming and quiet building with direct access to Simpson Street
- Access to a conference room, kitchenette, and fitness center
- On-site parking

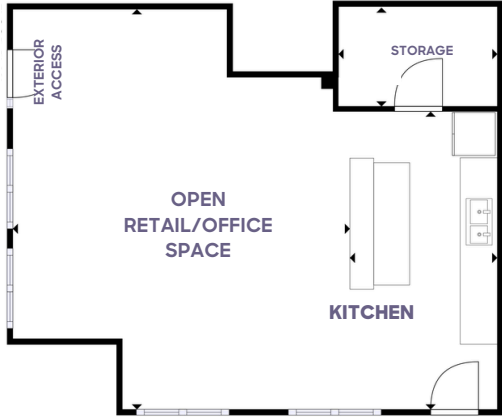
[CLICK HERE](#)
for Ste. 100 virtual tour

[CLICK HERE](#)
for Ste. 103 virtual tour

[CLICK HERE](#)
for Ste. 108 virtual tour

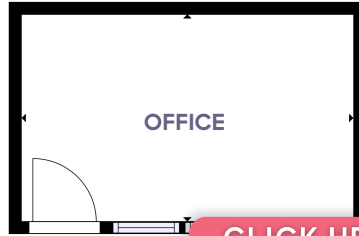


LEARN MORE ABOUT THIS PROPERTY
MarketRealEstate.com



SUITE 100

[CLICK HERE](#)
for Ste. 100 virtual tour



SUITE 103

[CLICK HERE](#)
for Ste. 103 virtual tour



SUITE 108

[CLICK HERE](#)
for Ste. 108 virtual tour



LEARN MORE ABOUT THIS PROPERTY
MarketRealEstate.com



HEIDI SCHAMBER

303 444 4344

Heidi@MarketBoulder.com

BRITTANY BOUDREAU

303 444 0566

Brittany@MarketBoulder.com