

## Broomfield Flex Spaces for Lease

**557 BURBANK ST | BROOMFIELD, CO**

### UNIT A

Size: 950 SF

Rate: \$15.00/SF + \$7.42 NNN

Available: Now

### UNIT H

Size: 1,400 SF

Rate: \$15.00/SF + \$7.42 NNN

Available: Now

# FLEX THOSE FEELS

Get ready for a whole lot of good juju, the kind you can't just buy off the shelf... but you sure can lease it! These warehouse spaces are not only minutes away from Boulder's feel-good vibes, but they also come with some seriously good-vibe neighbors. So, why not hop on this wave of positivity and bring your vision to life right here? Let's keep this good thing going!

## PROPERTY HIGHLIGHTS

- Easy access to HWY 287 and only 0.5 miles from US 36
- Unit A features Temperature controlled warehouse & office space
- 10' Drive-In Doors, three phase power, ventilation access, shared restroom



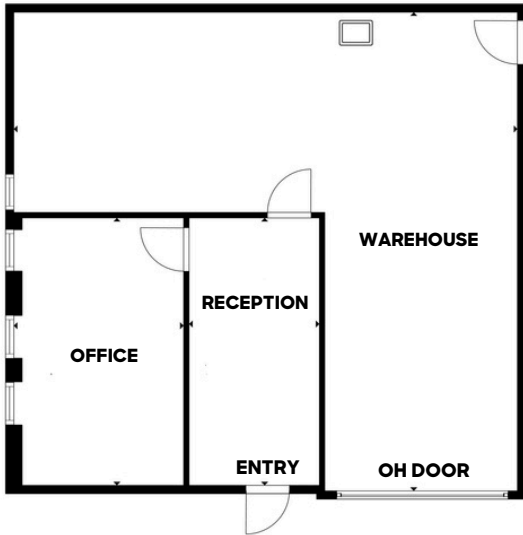
**CLICK HERE**  
for A virtual tour



LEARN MORE ABOUT THIS PROPERTY

[MarketRealEstate.com](https://MarketRealEstate.com)

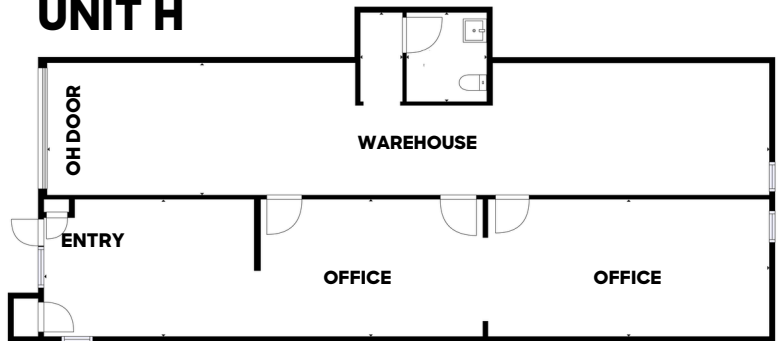
## UNIT A



CLICK HERE  
for A virtual tour



## UNIT H



LEARN MORE ABOUT THIS PROPERTY  
[MarketRealEstate.com](http://MarketRealEstate.com)

**RACHEL ROHRIG**

303 444 4910

Rachel@MarketBoulder.com

**BRITTANY BOUDREAU**

303 444 0566

Brittany@MarketBoulder.com

