

## Modern Sublease Without The Attitude

**4999 PEARL EAST CIR | BOULDER, CO 80301  
SUITE 103**

Size: 3,887 SF

Price: ~~\$24.00~~ **\$10.00 NNN**

Sublease term through April 30, 2025

**BELOW MARKET RATE  
FOR 2021!**

# HOME OF THE PROS

It can be tough to find an office suite that suits you, especially in a place like Boulder. If you want the crowds and cachet, you go downtown. If you want more space, you get out of town. And if you want a blend of square footage AND fresh aesthetics, you go right here. This East Boulder office has everything a professional service business needs to work comfortably, get the job done and stay in the bounds of Boulder.

### PROPERTY HIGHLIGHTS

- Convenient East Boulder location just off Foothills Pkwy.
- Large, functional layout
- 7 private offices, conference room, 2 restrooms and breakroom/kitchen
- Modern suite with good natural light
- Plenty of on-site parking



[CLICK HERE](#)  
for virtual tour



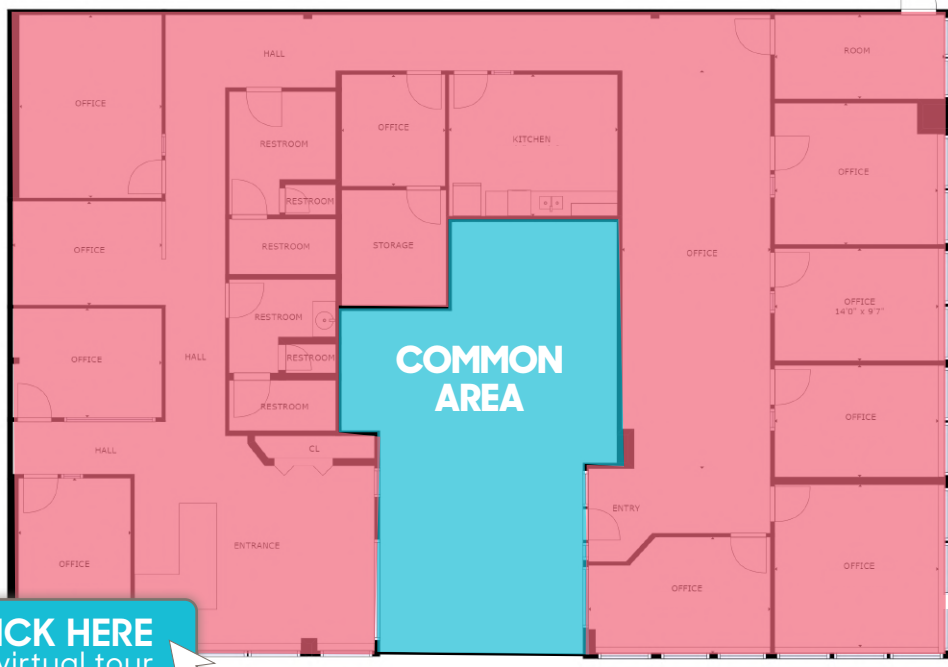
LEARN MORE ABOUT THIS PROPERTY  
[MarketBoulder.com](https://MarketBoulder.com)



# market

REAL ESTATE

DISCLAIMER: The information contained herein has been obtained from sources believed reliable. While we do not doubt its accuracy, we have not verified it and make no guarantee, warranty or representation about it. It is your responsibility to independently confirm its accuracy and completeness.



LEARN MORE ABOUT THIS PROPERTY  
[MarketBoulder.com](http://MarketBoulder.com)

**TODD WALSH, CCIM**  
 303 444 4888 Todd@MarketBoulder.com

**LAURA FRENKEL**  
 303 444 4994 Laura@MarketBoulder.com

