

## Office/Flex Sublease In Former Museum

**11025 DOVER ST | WESTMINSTER, CO 80021**  
SUITE 600

Size: 2,160 - 3,000 SF

Price: \$3,870-\$5,375/month Gross

Available Now

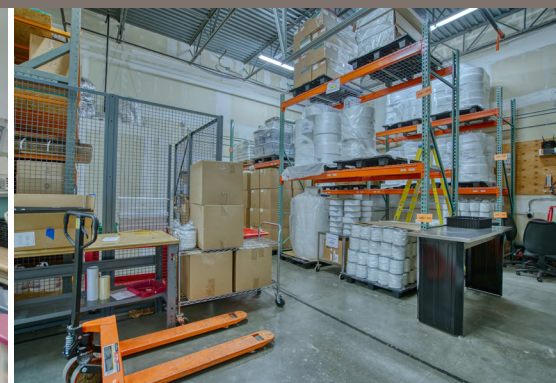
Term: 2-3 years

# HAVE A NICE FLIGHT

Ladies and gentleman, the captain has turned on the sublease sign. If you haven't already, please take your seat and fasten your seatbelt because this office/flex space will depart shortly. It was previously home to the Spirit of Flight Museum, giving the space an open, airy feel with a variety of versatile rooms and spaces. At this time, we ask that you sit back, relax and imagine your business here. Thank you for flying Market Real Estate.

### PROPERTY HIGHLIGHTS

- Current tenant prefers to sublease office and retain warehouse
- Warehouse space with overhead doors
- Nicely built-out office, kitchen and bathroom with shower
- Utilities included in rent
- Great location off Wadsworth near US 36

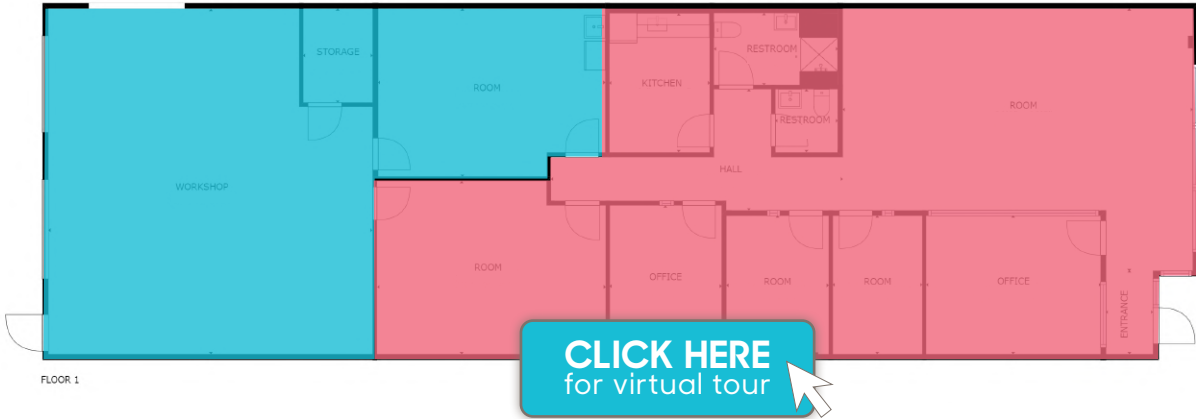


[CLICK HERE](#)  
for virtual tour

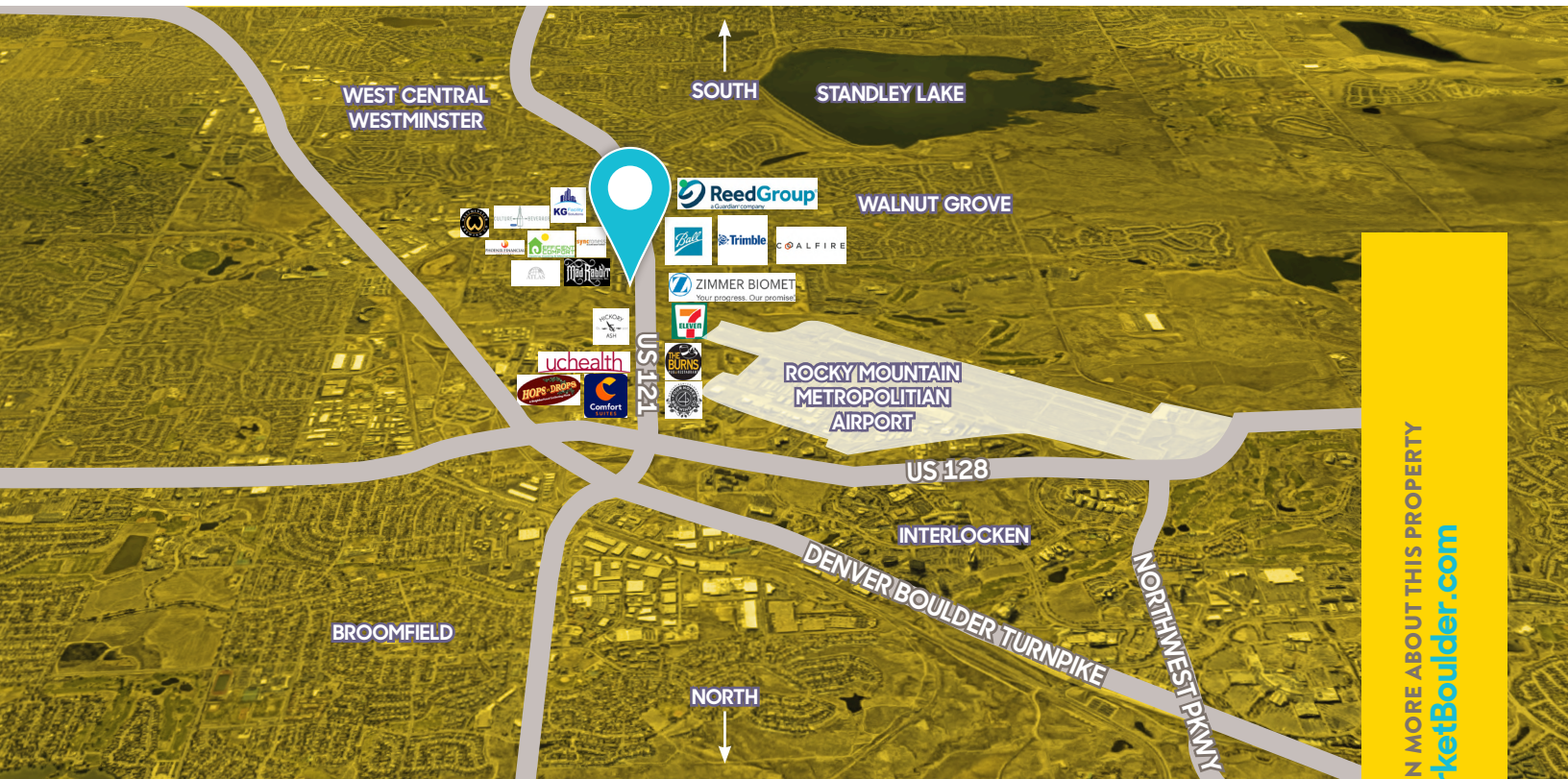


LEARN MORE ABOUT THIS PROPERTY  
[MarketBoulder.com](https://MarketBoulder.com)

DISCLAIMER: The information contained herein has been obtained from sources believed to be reliable. While we do not doubt its accuracy, we have not verified it and make no guarantee, warranty or representation about it. It is your responsibility to independently confirm its accuracy and completeness.



- Tenant prefers not to lease
- For Lease



LEARN MORE ABOUT THIS PROPERTY  
[MarketBoulder.com](http://MarketBoulder.com)

**AARON BANEY**  
 303 444 4912 Aaron@MarketBoulder.com

**TODD WALSH, CCIM**  
 303 444 4888 Todd@MarketBoulder.com

