

Corner Office or Retail For Sublease

515 BRIGGS ST | ERIE, CO 80516
SUITE E

Unit Size: 1,200 SF

Price: \$25/SF gross (\$2,500 per month) + utilities

Available Now

Sublease term through January 31, 2023

DOWNTOWN DONE RIGHT

Downtown is good. A downtown corner sublease is better. This awesome, airy Erie space (dare you to say that five times fast) is at the center of the action, but still quiet enough to get your work done because, well, it's Erie. Briggs Street is home to the local farmer's market, which means lots of foot traffic and drivers-by if retail is your game. Plus, plenty of fresh produce to snack on during work.

PROPERTY HIGHLIGHTS

- Can't-miss signage and new facade
- Large storefront windows
- 3 offices or conference rooms
- Kitchenette
- 2 shared restrooms



[CLICK HERE](#)
for virtual tour



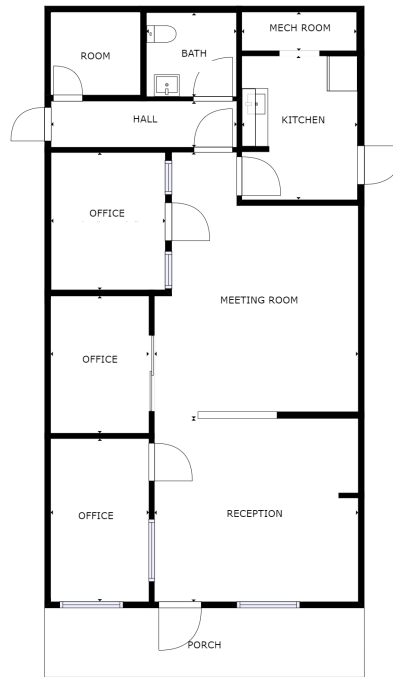
LEARN MORE ABOUT THIS PROPERTY
MarketBoulder.com



market

REAL ESTATE

DISCLAIMER: The information contained herein has been obtained from sources believed reliable. While we do not doubt its accuracy, we have not verified it and make no guarantee, warranty or representation about it. It is your responsibility to independently confirm its accuracy and completeness.



[CLICK HERE](#)
for virtual tour



LEARN MORE ABOUT THIS PROPERTY
MarketBoulder.com



TODD WALSH, CCIM

303 444 4888 Todd@MarketBoulder.com

LAURA FRENKEL

303 444 4994 Laura@MarketBoulder.com