

Warehouse With Small Office & Fenced Yard For Lease

3951 MACARTHUR DR | LOVELAND, CO

Building Size: 23,625 SF
Fenced Yard Size: 0.25 Acres included
Lease Rate: \$12.00/SF (\$4.00 NNN)
Available: 30 Days

3,240 SF Office Space | 20,385 SF Warehouse

MORE POWER TO YOU

This XXL warehouse is ready to rumble. Boasting six dock high doors, with plenty of power to go around, this warehouse is ready to be the powerhouse for your business. While all the heavy lifting is getting done out back, enjoy the three sunny offices, reception space, conference room, and break room in the front office. The yard space itself does us in, with a quarter acre of fenced storage yard to help your business move more product and be more 'powerful'.

PROPERTY HIGHLIGHTS

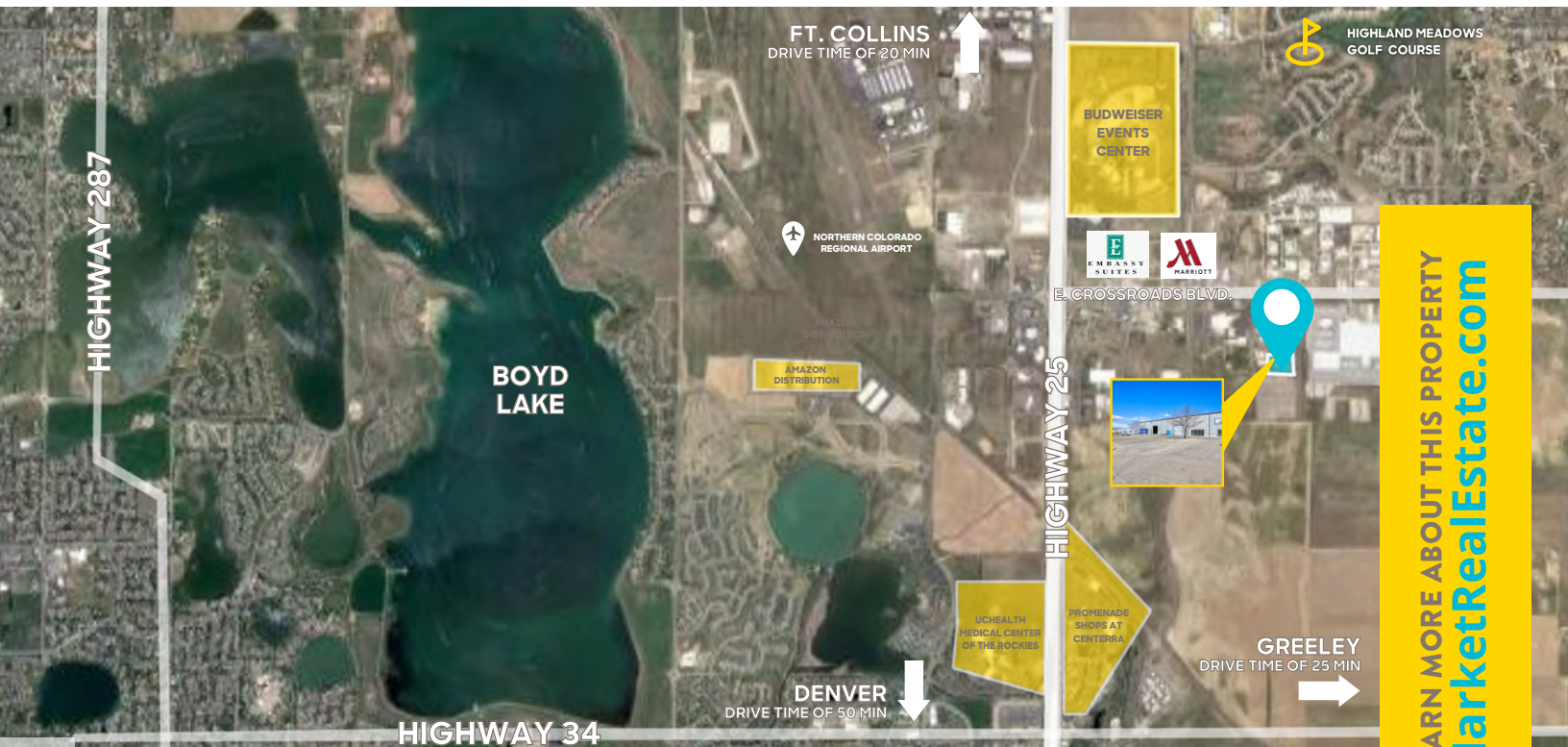
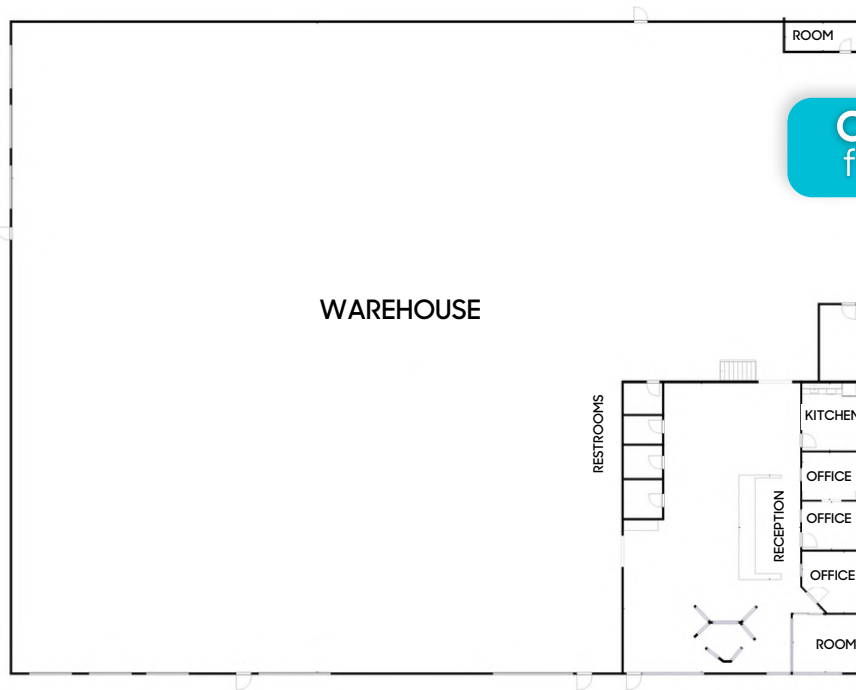
- Power: 1200 Amps, 3 Phase, 277/480 Volt
- Six (6) Dock High Doors
- Two (2) Drive-In Doors
- 24' Clear Height
- Included: Attached Fenced Yard Space: 0.25 Acre
- Negotiable: Additional 1 Acre (Detached) yard



[CLICK HERE](#)
for virtual tour



LEARN MORE ABOUT THIS PROPERTY
MarketRealEstate.com



LEARN MORE ABOUT THIS PROPERTY
MarketRealEstate.com

RACHEL ROHRIG

303 444 4910 Rachel@MarketBoulder.com

BRITTANY BOUDREAU

303 444 0566 Brittany@MarketBoulder.com

