

## Boulder Office Space for Sublease

2449 PINE STREET | BOULDER, CO 80302

Size: 1,620 SF

Rate: \$25/SF NNN (\$22.25)

Date Available: 30 Days

Sublease Term End Date: 11/30/2028

# OFFICE SPACE

This warm, inviting location will never feel like just another day at the office! It has over 1,600 square feet of extremely cozy space with SIX private offices... all ready for you to dive in and take the bull by the horns (or just stand around the watercooler). And, this beautiful, standalone building near downtown Boulder has free (easy!) onsite parking, a reception area, and a kitchenette. It's also just an easy walk away from Pearl Street's shopping and dining. Are you ready to take office?

### PROPERTY HIGHLIGHTS

- Beautiful freestanding building
- Free, easy parking
- Exceptional visibility
- Food, drinks, and shopping are within walking distance
- Super warm and inviting space



[CLICK HERE](#)  
for virtual tour

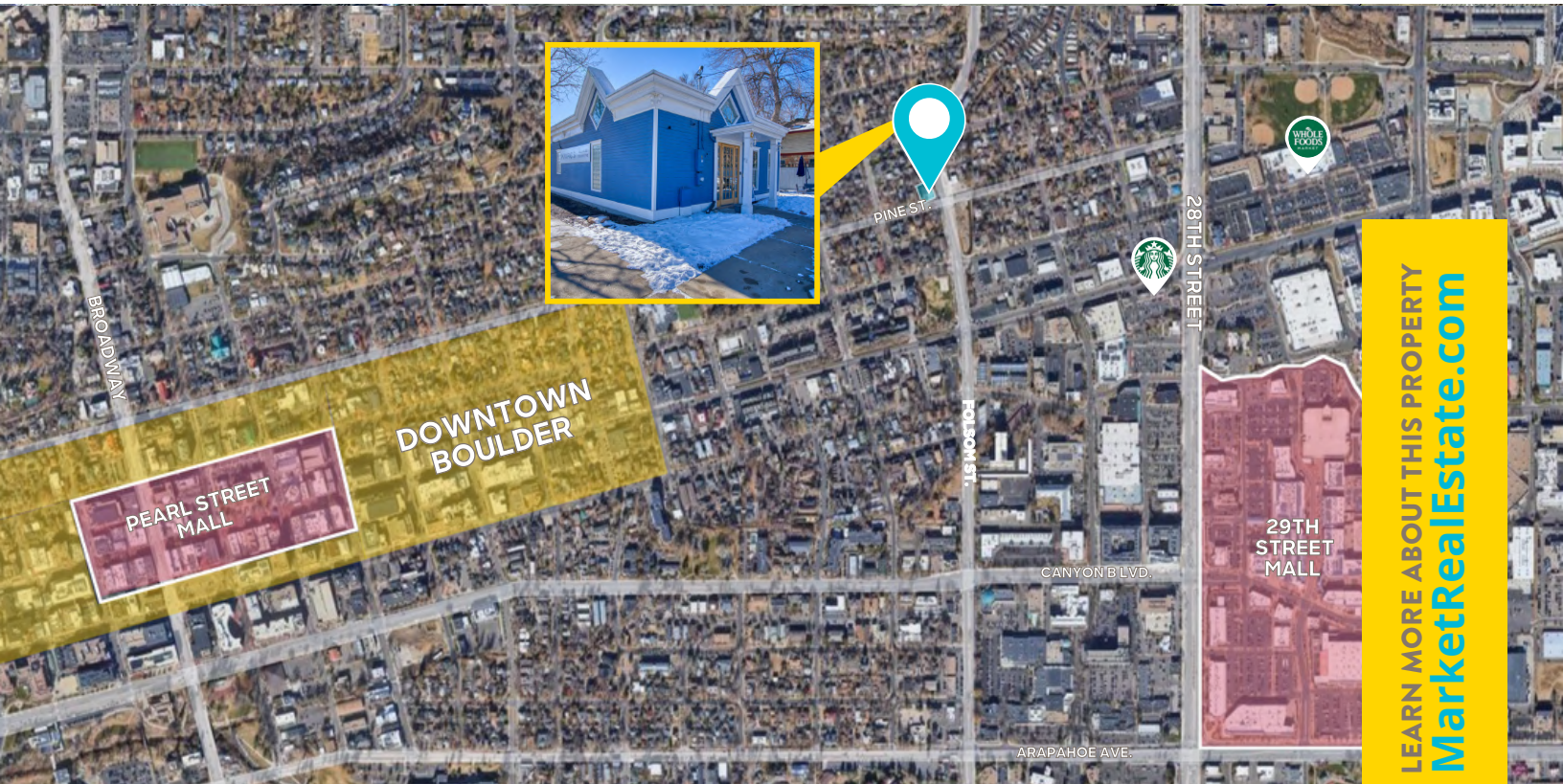
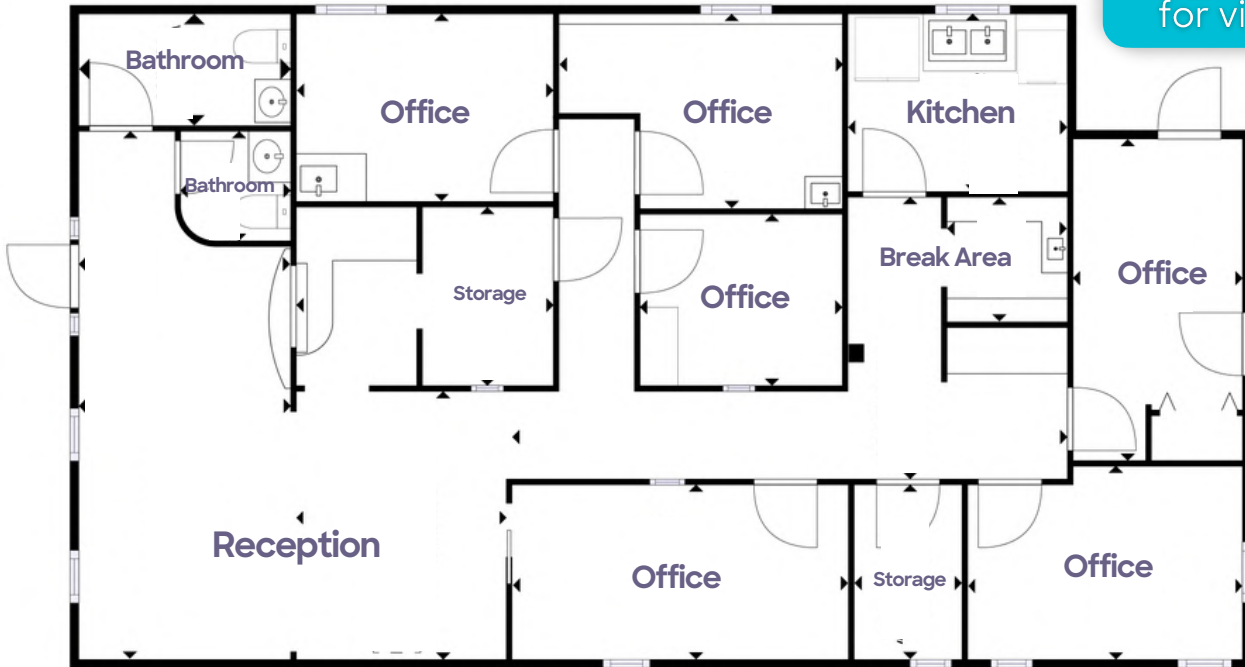


LEARN MORE ABOUT THIS PROPERTY  
[MarketRealEstate.com](https://MarketRealEstate.com)





[CLICK HERE](#)  
for virtual tour



LEARN MORE ABOUT THIS PROPERTY  
[MarketRealEstate.com](https://MarketRealEstate.com)

**RACHEL ROHRIG**  
303 444 4910  
Rachel@MarketBoulder.com

**BRITTANY BOUDREAU**  
303 444 0566  
Brittany@MarketBoulder.com

